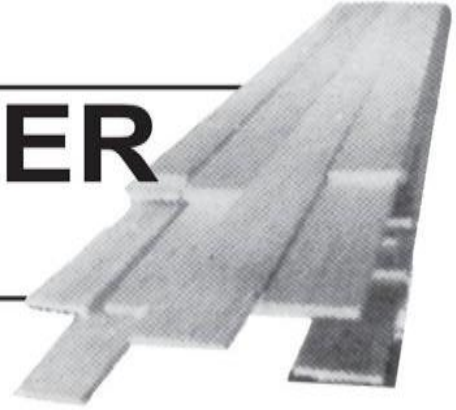


POLLEY TIMBER PTY. LIMITED



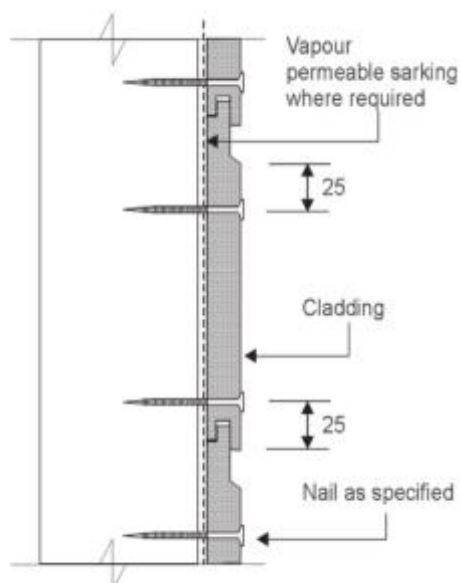
TIMBER CLADDING INSTALLATION

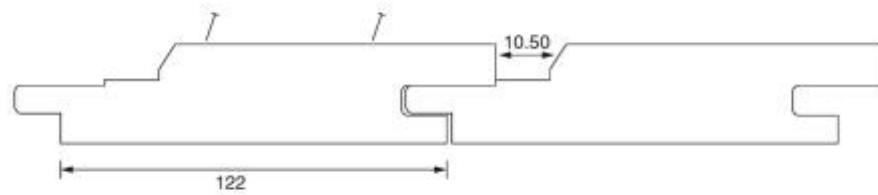


FIXING

Minimum 10g galvanised screws are recommended for Channel, Shiplap and Chamfered Cladding for both face fixing and concealed fixing. Cladding ex 150x25 and wider should be face fixed only.

Stud spacings should be at 450mm centres and the appropriate breather sarking must be used to prevent moisture being trapped.





A small expansion gap of 1-2mm needs to be left between boards to allow for naturally occurring expansion and contraction.

All end matched joints must be sealed with Sikaflex 11FC to prevent moisture being taken in from the end grain. Appropriate flashing must be used where applicable.

FINISHING

Timber is a hygroscopic product, it will expand and contract in response to the conditions it is exposed to. To help minimise this movement the Cladding must be oiled all around with a good quality oil based, exterior oil prior to fixing. Another coat must be applied immediately after fixing. It is recommended a third coat be applied approximately 6 weeks later.

